

July 13, 2015

**CANTON
MUNICIPAL
UTILITIES**

Mr. Shane Hixon
The Meadows of Charlton
Canton MS. 39046

COMMISSIONERS

MIRIAM KOURY
CHAIRMAN

JOHN NOBLE
LONDON SMITH
CHARLES WEEMS
JEWEL WILLIAMS

MANAGEMENT

JOHN WALLACE
GENERAL MANAGER

SANDY SINCLAIR
HUMAN RESOURCE


RE: The Meadows of Charlton Lots 1-5 residential lots.

Dear Mr. Shane Hixon

As per our conversation Canton Municipal Utilities will provide gas and water service to this project. CMU requires a set of plans at least two weeks prior to the pre-construction meeting for review and approval. The pre-construction meeting is required before the beginning of construction to review plans with the developer and his contractor.

CMU looks forward to working with you on this project.

Sincerely,


Don Holtsinger
CMU Engineering Dept.
601-855-5958



MISSISSIPPI STATE DEPARTMENT OF HEALTH

November 12, 2015

Mr. Ron McMaster, Jr., P.E.
McMaster & Associates, Inc.
212 Waterford Square, Suite 300
Madison, MS 39110

RE: The Meadows, Lots 1-5, 5 Total Lots, CMU -- Lake Caroline, PWS ID 0450034,
Madison County, Ref #116951

Dear Mr. McMaster:

We have reviewed the information submitted in relation to the above referenced project and plans and specifications are hereby approved.

The Bureau of Public Water Supply, Mississippi State Department of Health must be notified of the final inspection in sufficient time to assure that a Bureau representative can be present. When this project has been completed, we will need:


Certification from you that the project has been constructed in substantial accordance with the approved specifications

Records of satisfactory bacteriological results from an approved laboratory

One set of as-built plans

If construction of this project has not been initiated within one year from this date, then this approval will be invalid and the project must be resubmitted.

Sincerely,


Greg Caraway, P.E.
Bureau of Public Water Supply

pc: Responsible Official
Certified Operator

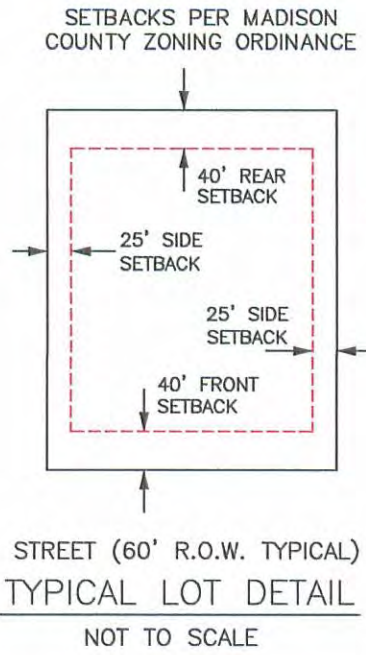
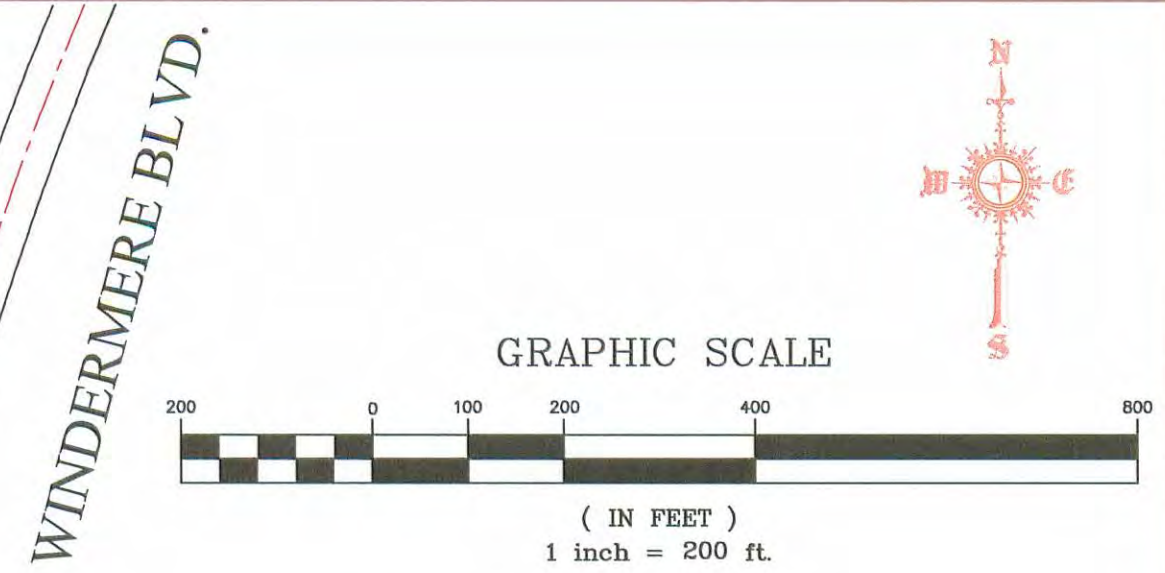
OWNER: STEELSHOT PROPERTY, LLC
 116 SOLLEFTEA DRIVE
 MADISON, MS 39110
 MINIMUM SETBACK FROM MEAN HIGH WATER MARK OF LAKE - 100'
 MINIMUM LOT WIDTH @ FRONT 40' SETBACK - 100'

PRELIMINARY PLAT

THE MEADOWS

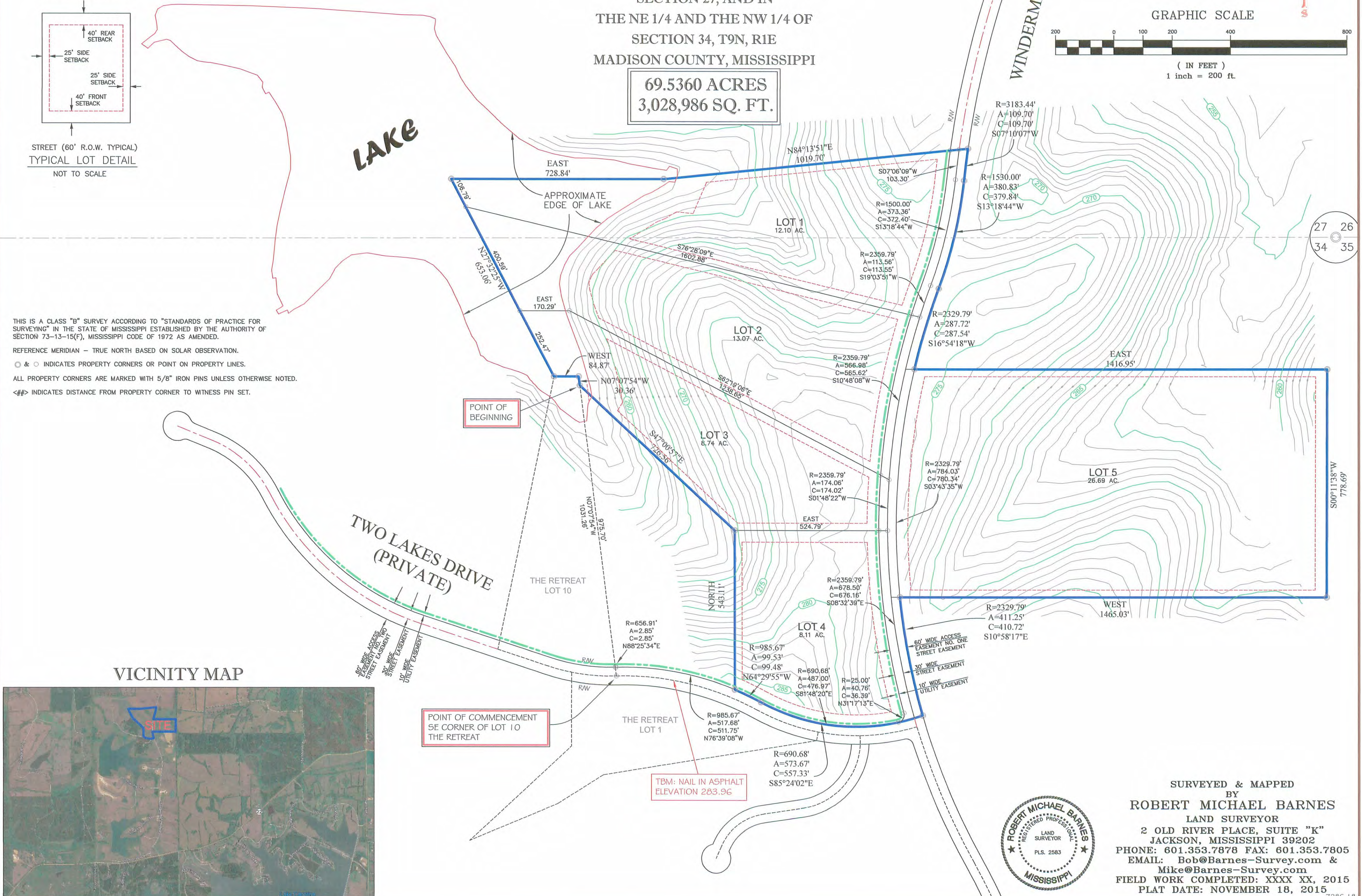
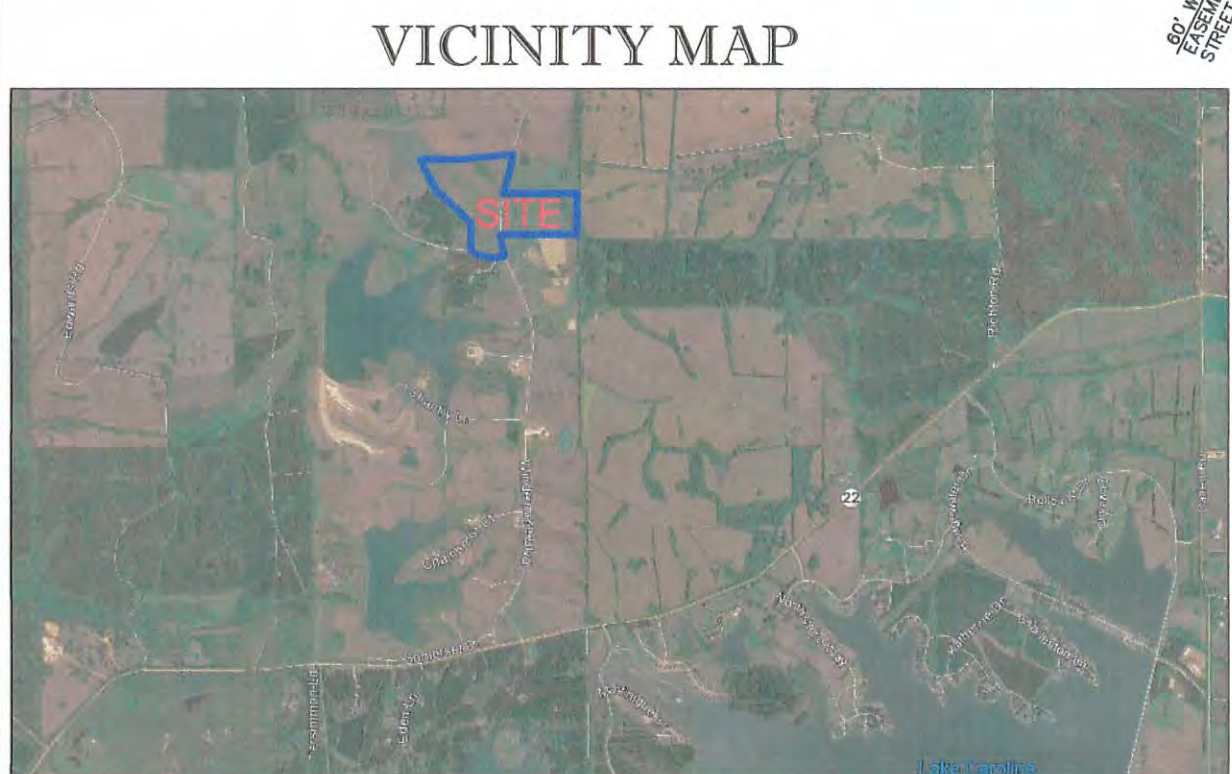
SITUATED IN THE SE 1/4 AND THE SW 1/4
 SECTION 27, AND IN
 THE NE 1/4 AND THE NW 1/4 OF
 SECTION 34, T9N, R1E
 MADISON COUNTY, MISSISSIPPI

69.5360 ACRES
3,028,986 SQ. FT.



THIS IS A CLASS "B" SURVEY ACCORDING TO "STANDARDS OF PRACTICE FOR SURVEYING" IN THE STATE OF MISSISSIPPI ESTABLISHED BY THE AUTHORITY OF SECTION 73-13-15(F), MISSISSIPPI CODE OF 1972 AS AMENDED.

REFERENCE MERIDIAN - TRUE NORTH BASED ON SOLAR OBSERVATION.
 & O INDICATES PROPERTY CORNERS OR POINT ON PROPERTY LINES.
 ALL PROPERTY CORNERS ARE MARKED WITH 5/8" IRON PINS UNLESS OTHERWISE NOTED.
 <##> INDICATES DISTANCE FROM PROPERTY CORNER TO WITNESS PIN SET.



SURVEYED & MAPPED
 BY
ROBERT MICHAEL BARNES
 LAND SURVEYOR
 2 OLD RIVER PLACE, SUITE "K"
 JACKSON, MISSISSIPPI 39202
 PHONE: 601.353.7878 FAX: 601.353.7805
 EMAIL: Bob@Barnes-Survey.com &
 Mike@Barnes-Survey.com
 FIELD WORK COMPLETED: XXXX XX, 2015
 PLAT DATE: NOVEMBER 18, 2015